

# ROBIN

new portable appliance testers

SmartPAT5500 & SmartPAT3500



Innovators  In Testing Technology

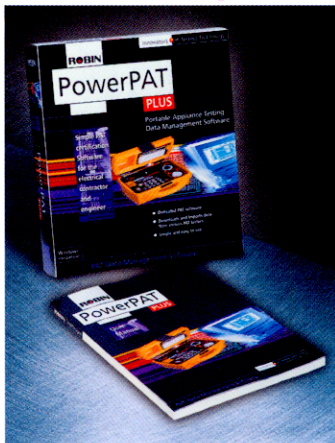
SmartPAT Comparator	5500	3500
Earth bond test (5A/10A/26A)	●	●
100mA business equipment test	●	●
Insulation test	●	●
P-N Continuity/Fuse Test	●	●
Earth Leakage	●	○
Tests 110V and 230V appliances	●	●
Flash Tests	●	○
Downloads to Printer	●	●
Downloads to a computer	●	○
Internal Floppy Drive	●	○
IEC lead test	●	●
Reads barcodes	●	○
Input voltage 110V/230V	●	●

### Optional Data Management Software

PowerPAT Plus is a windows based user friendly software package, which can be used in conjunction with a variety of portable appliance testers including the SmartPAT 5500. The PAT tester results can also be entered manually – for example when using the SmartPAT3500.

### Features

- Windows environment
- Easy to use
- Downloads from a wide range of appliance testers
- Automatic set mode for new appliances
- Accepts test results from more than one site at a time
- Reviews test results
- Prints test certificates in 3 formats
- Test sheets can include previous test results
- Includes comprehensive data backup/restore facilities
- Easily accessible and detailed help screens available



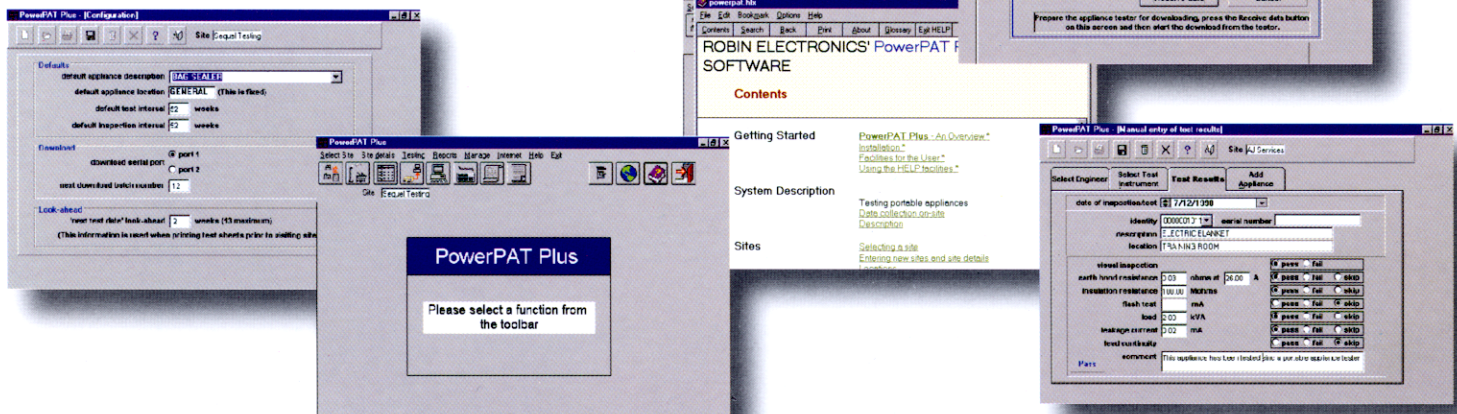
### System Requirements

- IBM compatible PC with 12Mb RAM 486/DX2-66 processor or better
- 30Mb free on hard disk VGA monitor or better
- Windows 3.1/DOS 5.0 or later
- Windows supported printer
- Compatible mouse
- Free communication port



### SP 1000 Mini Printer

Without using any additional software the SP1000 can be used to directly printout stored test records. The printer is compact and easily transported and is ideal for test professionals who need to issue an immediate written account of work carried out. The SP1000 mini printer will fit comfortably within the lid space of the SmartPAT series of portable appliance testers to make transportation even easier. The printer is powered by a rechargeable battery and comes complete with mains charger and RS232 Printer Lead.



# Technical Specifications

	SmartPAT 5500	SmartPAT 3500
<b>Earth Bond</b>		
O/C volts	3 Vrms	3 Vrms
Test Current	5A, 8A, 26A	5A, 8A, 26A
Displayed values	0.01-19.99Ω	0.01-19.99Ω
Accuracy	±(3%+4 dgts)	±(3%+4 dgts)
Pass Threshold	0.1Ω steps from 0.1Ω to 19.99Ω	0.1Ω steps from 0.1Ω to 19.99Ω
Test Time	5/10/15/60s	5/60s
<b>Earth Bond (Business Equipment)</b>		
O/C Volts	3 Vrms	3 Vrms
Test Current	100mA	100mA
Displayed values	0.01-19.99Ω	0.01-19.99Ω
Accuracy	±(3%+4 dgts)	±(3%+4 dgts)
Pass Threshold	0.1Ω steps from 0.1Ω to 5Ω then 0.5Ω steps to 19.99Ω	0.1Ω steps from 0.1Ω to 19.99Ω
Test times	5/10/15/60s	5/60s
<b>Insulation Test (PN-E)</b>		
O/C Volts	560V dc	560V dc
Displayed values	0.1-99.9MΩ and 1-299MΩ	0.1-99.9MΩ and 1-299MΩ
Displayed Values Leakage	0.1mA – 9.9mA	0.1mA – 9.9mA
Nominal Test Current (into 500KΩ)	1mA	1mA
Accuracy	±(5%+4 dgts)	±(5%+4 dgts)
Pass Threshold	0.1Ω steps from 0.2Ω to 0.9Ω 1MΩ steps from 1MΩ to 9MΩ	0.1Ω steps from 0.2Ω to 0.9Ω 1MΩ steps from 1MΩ to 9MΩ
Test time	5/10/15/60s	5/60s
<b>Load/Leakage</b>		
Displayed Values Load	0.1kVA –3.99kVA	
Accuracy	±(5%+4 dgts)	
Displayed Values Leakage	0.1mA – 9.9mA	
Accuracy	±(5%+4 dgts)	
Pass Threshold	0.5-10mA in 0.5mA steps	
Test time	5/10/15/60s	
<b>Flash Test</b>		
O/C volts	1500V (class I) 3000V (class II)	
Current into s/c	5mA	
Displayed values	0.1mA – 4.99mA	
Accuracy	±(5%+4 dgts)	
Pass Threshold	0.5-4.5mA in 0.5mA steps	
Test time	5/10/15/60s	
<b>Nominal Power Supply</b>	230V/13A, 110V/13A	50Hz

## General Specifications

IP Rating:	IP30
Operating temp:	0 to 40°C - results within calibration limits
Humidity:	0-90% R-H non-condensing
Pollution Level:	II
Design:	To BSEN 61010-1 CATII 300V



# Optional Accessories

## SP Scan 12 Wide Head Scanner

Easy to use, low current, intelligent barcode reader. SP Scan 12 can be used to scan barcodes attached to curved surfaces or where actual contact with the barcode surface is difficult.

## Extension lead Tester EL 100

Adaptor for testing extension leads. Allows the earth test lead from SmartPAT to be connected to extension leads in order to perform insulation and earth bond tests.

## 110V Adaptor AD 110V

Enables SmartPAT to be powered from a 110V AC centre tapped supply instead of 230V AC.

## PAT Test Log Book

IRPI Portable appliance log book for maintaining a register of portable appliance tests in accordance with testing regulations. Can be used as a presentation document for test results.

## Communication Cables

Robin has a range of communication cables for interconnecting SmartPAT 5500 and SmartPAT 3500 with its printer and computers loaded with PowerPAT Plus software.

- COM 1 Data Lead (PC 25 pin – 9 pin),
- COM2 Printer lead, (9pin – 9pin)
- COM 3 data Lead (PC 9 pin- 9pin)

## PAT accessories available as optional extras

- APP 1000 - Barcode appliance no. labels 0-1000 with dispenser.
- APP 2000 - Barcode appliance labels 1001-2000.
- Auto 200 - Automatic test barcode labels. To assign an automatic test sequence to a particular appliance. Sets of 14 different 3 digit numbers. (200 labels in total).
- PASS 500 - Appliance pass labels. Quantity – 500.
- Pass 250 - Appliance pass labels for fixing around flexible cords. Quantity – 250.
- Fail 100 - Appliance fail labels. Quantity – 100

## Robin also have a range of portable appliance accessories under their Budgie brand

- |                                 |                                      |
|---------------------------------|--------------------------------------|
| BD 500 Pass – Pass labels       | BDTL3 – Do Not Use label             |
| BD 250 Fail – Fail labels       | BDTL4 – Failed label                 |
| BDWR 200 – Pass wrap            | BDTL5 – Inspected label              |
| round cable labels              | BDTL6 – Calibrated label             |
| BDPT 250 – Pass plug top labels | BDTL7 – Serial No label              |
| BDBC 1000 – Bar Code labels     | BDTL8 – Tested label                 |
| BDTL1 – Rejected labels         | BDTL9 – Passed label                 |
| BDTL2 – Do Not Switch           | BDTL10 – Serviced by label off label |



# SmartPAT 5500 Advanced Portable Appliance Tester

Capable of performing earth bond, insulation, fuse continuity, run/leakage and flash voltage tests.

The SmartPAT 5500 has an operating panel which carries the feature buttons, serial port, floppy disk drive and the results display. The lid of the case provides a storage area for the cables associated with the appliance tester.

Normal Mode guides the user through the test sequences with detailed help messages. Professional Mode allows the experienced user to carry out tests rapidly thus saving valuable testing time.

The SmartPAT 5500 comes with three user selectable output modes:

- Download to PC
- Printer option
- Storage on internal 3½" floppy disc.



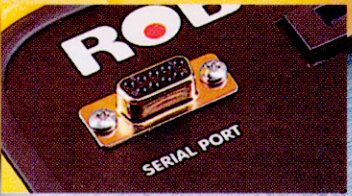
### SmartPAT5500 key features:



**On-board Data Memory** allows up to 1000 records to be stored.



**Tests 230V and 110V appliances** and also performs IEC lead tests.



**Dedicated communication port.** For downloading results, connecting external printers or connecting a barcode reader and external keyboard.



**Easy to use Auto test mode** and one touch manual mode together with alphanumeric keypad for rapid data entry.

Capable of performing earth bond, insulation, and fuse continuity tests.

The SmartPAT 3500 has an operating panel, which carries the feature buttons, connectors and the results display. The lid of the case provides a storage space for the cables associated with the appliance tester.

The SmartPAT 3500 has been built to meet the requirements of the IEC publication 1010, Safety Requirements for Electronic Measuring Apparatus.

The SmartPAT 3500 can be connected to an external printer for printing of test results.

## SmartPAT 3500 Manually Operated Portable Appliance Tester

110V/240V

complete

IEC  
1010



### SmartPAT3500 key features:



Dedicated communication port for connecting external printer.



Tests 230V and 110V appliances and can also perform safety tests on IEC leads.



One touch operation together with 5 second testing allows quick and easy testing.